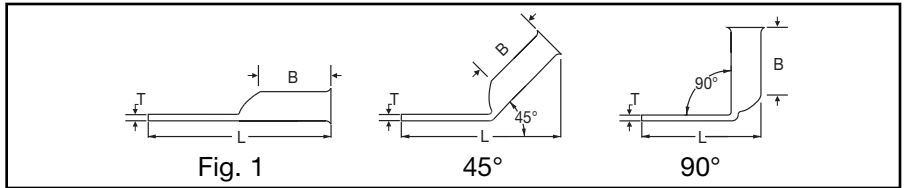
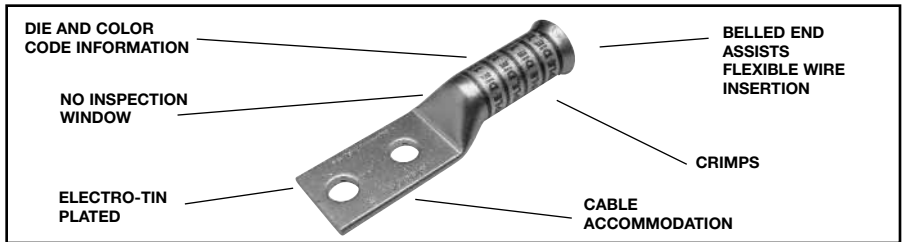


**TWO HOLE HYLUG™
FLEX CONDUCTOR
LONG BARREL
BELLED END**

TYPES YA-2TC-FXB,
YAV-2TC-FXB

**COPPER COMPRESSION
TERMINAL**

UL Listed 90° C,
600 Volts to 35 kV ◆



45° and 90° angles are available.
Please contact Customer Service to order:
1-800-346-4175



Catalog Number	Fig #	Conductor		Stud Hole Size	Stud Hole Spacing	Tongue Width	Figure Dimensions			Dieless (# of crimps)	▲ Installation Tooling					Wire Strip Length
		AWG	MM²				(B)	(T)	(L)		Mechanical MD6, OUR840, MD7-34R	Hydraulic BCT500HS, Y500CTHS		Y35, Y39, Y750, Y46*, PAT750	Color Code	
YA8C2TC14E2-FXB	1	37/24	**	1/4"	3/4"	.41"	.90"	.08"	2.54"	Y8MRB-1 (2) Y1MRTC (2) MY29-11 (2)	W8CRT (2) W8CVT (2) X8CRT (2)	W8CRT (2) W8CVT (2) X8CRT (2)	U8CRT (2)	Red	49	1"
YA8C2TC38-FXB	1	#8 Weld #8 AWG	10	3/8"	1"	.57"	.90"	.06"	2.98"	Y81KFT (1) Y81KFTMBH (1) PAT81KFT-18V (1)						
YAV6C2TC14E2-FXB	1	61/24 #6 Weld #6 AWG	**	1/4"	3/4"	.48"	1.22"	.08"	2.88"	Y1MRTC (2) MY29-11 (2) Y644HS (1)	W5CVT (2) W5CRT (2) X5CRT (2)	W5CVT (2) W5CRT (2) X5CRT (2)	U5CRT (2)	Blue	7	1-5/16"
YAV6C2TC14-FXB	1			1/4"	5/8"	.48"	1.22"	.08"	2.76"	Y81KFT (1)						
YAV6C2TC38-FXB	1			3/8"	1"	.60"	1.22"	.06"	3.32"	Y81KFTMBH (1)						
YAV6C2N-FXB	1			1/2"	1-3/4"	.77"	1.22"	.04"	4.51"	PAT81KFT-18V (1)						
YAV5C2TC14-FXB	1	#5 AWG	—	1/4"	5/8"	.44"	1.22"	.07"	2.76"	Y644HS (1) Y81KFT (1) Y81KFTMBH (1) PAT81KFT-18V (1)						
YAV4C2TC14E2-FXB	1	91/24 - 105/24 #4 Weld #4 AWG	—	1/4"	3/4"	.55"	1.22"	.09"	2.93"	Y1MRTC (4) MY29-11 (2)	W4CVT (2) W4CRT (2) X4CRT (2)	W4CVT (2) W4CRT (2) X4CRT (2)	U4CRT (2)	Gray	8	1-5/16"
YAV4C2TC14-FXB	1			1/4"	5/8"	.55"	1.22"	.09"	2.81"	Y644HS (1)						
YAV4C2TC516-FXB	1			5/16"	1"	.55"	1.22"	.09"	3.24"	Y81KFT (1)						
YAV4C2TC38-FXB	1			3/8"	1"	.63"	1.22"	.09"	3.37"	Y81KFTMBH (1)						
YAV4C2N-FXB	1			1/2"	1-3/4"	.77"	1.22"	.09"	4.56"	PAT81KFT-18V (1)						
YA3C2TC516-FXB	1	105/24 - 125/24 #3 Weld #3 AWG	—	5/16"	1"	.55"	1.48"	.09"	3.51"	MY29-11 (2) Y644HS (1) Y81KFT (1) Y81KFTMBH (1) PAT81KFT-18V (1)	W3CRT (2)	W3CRT (2)	U3CRT (2)	White	9	1-9/16"
YA3C2TC38-FXB	1			3/8"	1"	.58"	1.48"	.09"	3.64"							
YA3C2N-FXB	1			1/2"	1-3/4"	.77"	1.48"	.09"	4.83"							
YAV2C2TC14-FXB	1	125/24 - 150/24 #2 Weld #2 AWG	35	1/4"	5/8"	.67"	1.35"	.10"	3.00"	MY29-11 (2) Y644HS (1) Y81KFT (1) Y81KFTMBH (1) PAT81KFT-18V (1)	W2CVT (2) W2CRT (2) X2CRT (2)	W2CVT (2) W2CRT (2) X2CRT (2)	U2CRT (2)	Brown	10	1-7/16"
YAV2C2TC14E2-FXB	1			1/4"	3/4"	.67"	1.35"	.10"	3.13"							
YAV2C2TC14E1-FXB	1			1/4"	1"	.67"	1.35"	.10"	3.38"							
YAV2C2TC516-FXB	1			5/16"	1"	.67"	1.35"	.10"	3.44"							
YAV2C2TC38-FXB	1			3/8"	1"	.67"	1.35"	.10"	3.57"							
YAV2C2N-FXB	1			1/2"	1-3/4"	.77"	1.35"	.09"	4.76"							
YAV1C2TC38-FXB	1	175/24 - 225/24 #1 Weld #1 AWG	—	3/8"	1"	.75"	1.50"	.12"	3.74"	W1CVT (2) W1CRT-1 (2) X1CRT-1 (2)	W1CVT (2) W1CRT-1 (2) X1CRT-1 (2)	U1CRT-1 (2)	Green	11	1-9/16"	
YAV1C2N-FXB	1			1/2"	1-3/4"	.77"	1.50"	.12"	4.92"							

Consult cable manufacturers for stress relief instructions.
◆ For applications greater than 2000 Volts consult cable manufacturer for voltage stress relief instructions.
* Use PUADP-1 adaptor with U -dies in Y46 HYPRESS™.
** The MM² conductor sizes referenced here are for both Class 2 and Class 5 conductors.

*** The MM² conductor sizes listed are the recommendations for Class 5 conductor.
‡ P-RT die sets for use in Y46 HYPRESS™ only, PUADP-1 adaptor not required.
Note: All dimensions shown are for reference only.

▲ See tooling section of this catalog for complete tool and die listings. Use ONLY color-coded die recommendations for -FX connectors.
Consult shielded cable manufacturers for stress relief instructions.

Blue highlighted items are industry standard and most frequently ordered.

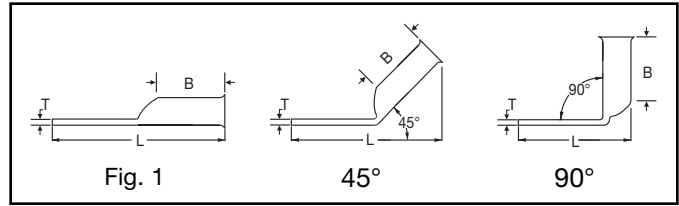
Compression Connections

BURNDY®

Copper Compression — Flex — Long Barrel — Belled End — No Inspection Window

C-64

TWO HOLE HYLUG™ FLEX CONDUCTOR LONG BARREL BELLED END (Continued)



UL Listed 90° C,
600 Volts to 35 kV ◆

45° and 90° angles are available.
Please contact Customer Service to order:
1-800-346-4175



Catalog Number	Fig #	Conductor		Stud Hole Size	Stud Hole Spacing	Tongue Width	Figure Dimensions			Dieless (# of crimps)	▲ Installation Tooling					Wire Strip Length
		AWG	MM²				(B)	(T)	(L)		Mechanical MD6, OUR840, MD7-34R	Hydraulic		Color Code	Die Index	
												BCT500HS, Y500CTHS	Y35, Y39, Y750, Y46*, PAT750			
YAV252TC14-FXB	1	275/24	50	1/4"	5/8"	.83"	1.50"	.12"	3.21"	MY29-11 (2) Y644HS (1) Y81KFT (2) Y81KFTMBH (2) PAT81KFT-18V (2)	W25RT (4)	W25RT (4)	U25RT (2)	Pink	12	1-9/16"
YAV252TC14E2-FXB	1	1/0 Weld		1/4"	3/4"	.83"	1.50"	.12"	3.34"		W25VT (4)	W25VT (4)				
YAV252TC38-FXB	1	1/0 AWG		3/8"	1"	.83"	1.50"	.12"	3.78"		X25RT (4)	X25RT (4)				
YAV252N-FXB	1		70	1/2"	1-3/4"	.83"	1.50"	.12"	4.96"	MY29-11 (2) Y644HS (1) Y81KFT (2) Y81KFTMBH (2) PAT81KFT-18V (2)	W26RT (4)	W26RT (4)	U26RT (2)	Black	13	1-13/16"
YAV262TC14-FXB	1	325/24		1/4"	5/8"	.93"	1.63"	.13"	3.40"		W26VT (4)	W26VT (4)				
YAV262TC14E2-FXB	1	2/0 Weld		1/4"	3/4"	.93"	1.63"	.13"	3.52"		W26RT (4)	W26RT (4)				
YAV262TC38-FXB	1	2/0 AWG	70	3/8"	1"	.93"	1.63"	.13"	3.96"	MY29-11 (2) Y644HS (1) Y81KFT (2) Y81KFTMBH (2) PAT81KFT-18V (2)	X26RT (4)	X26RT (4)	U26RT (2)	Black	13	1-13/16"
YAV262NTC38-FXB	1	2/0 AWG		3/8"	1-3/4"	.93"	1.63"	.13"	4.71"		W27RT (4)	W27RT (4)				
YAV262N-FXB	1			1/2"	1-3/4"	.93"	1.63"	.13"	5.15"		W27VT (4)	W27VT (4)				
YAV272TC14E2-FXB	1	450/24	95	1/4"	3/4"	1.02"	1.64"	.14"	3.58"	MY29-11 (2) Y644HS (1) Y81KFT (2) Y81KFTMBH (2) PAT81KFT-18V (2)	W27RT (4)	W27RT (4)	U27RT (2)	Orange	14	1-13/16"
YAV272TC38-FXB	1	3/0 Weld		3/8"	1"	1.02"	1.64"	.14"	4.01"		W27VT (4)	W27VT (4)				
YAV272N-FXB	1	3/0 AWG		1/2"	1-3/4"	1.02"	1.64"	.14"	5.20"		X27RT (4)	X27RT (4)				
YAV282TC14E2-FXB	1		120	1/4"	3/4"	1.14"	1.77"	.14"	3.76"	MY29-11 (2) Y644HS (1) Y81KFT (2) Y81KFTMBH (2) PAT81KFT-18V (2)	W28RT (4)	W28RT (4)	U28RT (2)	Purple	15	1-7/8"
YAV282NTC38-FXB	1	550/24		3/8"	1"	.75"	1.77"	.14"	4.20"		W28VT (4)	W28VT (4)				
YAV282TC38-FXB	1	4/0 Weld		3/8"	1"	1.14"	1.77"	.14"	4.20"		W28RT (4)	W28RT (4)				
YAV282NTC38-FXB	1	4/0 AWG	120	3/8"	1-3/4"	1.14"	1.77"	.14"	4.20"	MY29-11 (2) Y644HS (1) Y81KFT (2) Y81KFTMBH (2) PAT81KFT-18V (2)	X28RT (6)	X28RT (6)	U28RT (2)	Purple	15	1-7/8"
YAV282N-FXB	1			1/2"	1-3/4"	1.14"	1.77"	.14"	5.39"		W29RT (4)	W29RT (4)				
YAV292TC14E2-FXB	1	550/24		1/4"	3/4"	1.14"	2.00"	.15"	3.76"		W29VT (4)	W29VT (4)				
YAV292NTC38-FXB	1	4/0 Weld	—	3/8"	1"	.75"	2.00"	.15"	4.20"	MY29-11 (2) Y644HS (1) Y81KFT (2) Y81KFTMBH (2) PAT81KFT-18V (2)	W29RT (4)	W29RT (4)	U29RT (2)	Yellow	16	1-7/8"
YAV292TC38-FXB	1			3/8"	1"	1.14"	2.00"	.15"	4.20"		W29VT (4)	W29VT (4)				
YAV292NTC38-FXB	1			3/8"	1-3/4"	1.14"	2.00"	.15"	4.20"		X29RT (6)	X29RT (6)				
YAV292N-FXB	1		—	1/2"	1-3/4"	1.14"	2.00"	.15"	5.39"	MY29-11 (2) Y644HS (1) Y81KFT (2) Y81KFTMBH (2) PAT81KFT-18V (2)	W30RT (4)	W30RT (4)	U30RT (4)	White	17	2-1/4"
YA302N-FXB	1	250 Flex - CLASS G 259 Str. CLASS H 427 Str.		3/8"	1"	1.29"	2.18"	.18"	4.66"		W30VT (4)	W30VT (4)				
YA312TC38-FXB	1	250 Flex		1/2"	1-3/4"	1.29"	2.18"	.18"	5.85"		W31RT (4)	W31RT (4)				
YA312N-FXB	1	637/24 CLASS I, K, M	185	3/8"	1"	1.40"	2.32"	.19"	4.85"	MY29-11 (2) Y644HS (1) Y81KFT (2) Y81KFTMBH (2) PAT81KFT-18V (2)	W31VT (4)	W31VT (4)	U31RT (4)	Red	18	2-1/4"
YA322TC38-FXB	1	775/24		3/8"	1"	1.40"	2.32"	.19"	4.85"		W32RT (4)	W32RT (4)				
YA322N-FXB	1	313.1 kcmil		1/2"	1-3/4"	1.40"	2.32"	.19"	6.04"		X32RT (4)	X32RT (4)				
YA342TC38-FXB	1	925/24	240	3/8"	1"	1.55"	2.48"	.23"	5.10"	MY29-11 (2) Y644HS (1) Y81KFT (2) Y81KFTMBH (2) PAT81KFT-18V (2)	W32VT (4)	W32VT (4)	U32RT (4)	Blue	19	2-9/16"
YA342N-FXB	1	373.7 kcmil		1/2"	1-3/4"	1.55"	2.48"	.23"	6.29"		W33RT (4)	W33RT (4)				
YA342M-FXB	1	(350 kcmil nom.)		1/2"	1-3/4"	1.55"	2.48"	.23"	6.29"		X33RT (4)	X33RT (4)				
YA362M-FXB	1	1100/24	—	1/2"	1-3/4"	1.73"	2.95"	.26"	6.84"	MY29-11 (2) Y644HS (1) Y81KFT (2) Y81KFTMBH (2) PAT81KFT-18V (2)	U34RT (4)	U34RT (4)	Brown	20	3-1/16"	
YA362M-FXB	1	444.4 kcmil (450 nom.)		1/2"	1-3/4"	1.73"	2.95"	.26"	6.84"		U34RT (4)	U34RT (4)				
YA362M-FXB	1			1/2"	1-3/4"	1.73"	2.95"	.26"	6.84"		U34RT (4)	U34RT (4)				
YA382TC38-FXB	1	1325/24	300	3/8"	1"	1.84"	3.08"	.26"	6.01"	MY29-11 (2) Y644HS (1) Y81KFT (2) Y81KFTMBH (2) PAT81KFT-18V (2)	—	—	U38XRT (4)	Pink	L99	3-3/16"
YA382N-FXB	1	535.3 kcmil		1/2"	1-3/4"	1.84"	3.08"	.26"	7.01"		—	—				
YA382-FXBG2	1	(500 kcmil nom.)		3/8"	2"	1.84"	3.08"	.27"	6.82"		—	—				
YA382-FXBG3	1			1/2"	1-3/16"	1.84"	3.08"	.27"	6.26"		—	—				

Consult cable manufacturers for stress relief instructions.
◆ For applications greater than 2000 Volts consult cable manufacturer for voltage stress relief instructions.
* Use PUADP-1 adaptor with U -dies in Y46 HYPRESS™.
** The MM² conductor sizes referenced here are for both Class 2 and Class 5 conductors.

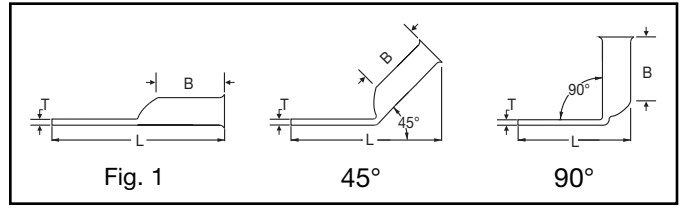
*** The MM² conductor sizes listed are the recommendations for Class 5 conductor.
‡ P-RT die sets for use in Y46 HYPRESS™ only, PUADP-1 adaptor not required.

▲ See tooling section of this catalog for complete tool and die listings. Use ONLY color-coded die recommendations for -FX connectors.
Note: All dimensions shown are for reference only.

Blue highlighted items are industry standard and most frequently ordered.

**TWO HOLE HYLUG™
FLEX CONDUCTOR
LONG BARREL
BELLED END
(Continued)**

UL Listed 90° C,
600 Volts to 35 kV ◆



45° and 90° angles are available.
Please contact Customer Service to order:
1-800-346-4175



Catalog Number	Fig #	Conductor		Stud Hole Size	Stud Hole Spacing	Tongue Width	Figure Dimensions			Dieless (# of crimps)	▲ Installation Tooling				Wire Strip Length	
		AWG	*** MM ²				(B)	(T)	(L)		Mechanical MD6, OUR840, MD7-34R	Hydraulic		Color Code		Die Index
												BCT500HS, Y500GTHS	Y35, Y39, Y750, Y46*, PAT750			
YA402N-FXB	1	1600/24 646 kcmil	400	1/2"	1-3/4"	1.98"	3.24"	.30"	7.22"	—	—	U39RT (4)	Black	24	3-5/16"	
YA442TC38-FXB	1	1925/24	500	3/8"	1"	2.19"	3.33"	.33"	6.44"	Y644HS (1) Y81KFT (3) Y81KFTMBH (3) PAT81KFT-18V (3)	—	—	U44XRT (4)	Yellow	L115	3-7/16"
YA442N-FXB	1	777.7 kcmil (750 kcmil nom.)		1/2"	1-3/4"	2.19"	3.33"	.33"	7.44"							
YA462N-FXB	1	2750/24 1111 kcmil (1000 kcmil nom.)		1/2"	1-3/4"	2.69"	3.58"	.39"	7.91"							

Consult cable manufacturers for stress relief instructions.
◆ For applications greater than 2000 Volts consult cable manufacturer for voltage stress relief instructions.
* Use PUADP-1 adaptor with U -dies in Y46 HYPRESS™.
** The MM² conductor sizes referenced here are for both Class 2 and Class 5 conductors.

*** The MM² conductor sizes listed are the recommendations for Class 5 conductor.
‡ P-RT die sets for use in Y46 HYPRESS™ only, PUADP-1 adaptor not required.

▲ See tooling section of this catalog for complete tool and die listings. Use ONLY color-coded die recommendations for -FX connectors.
Note: All dimensions shown are for reference only.